



uponor

# PP-RCT Product Catalog

Hot Potable Water  
Cold Potable Water  
Hydronic Heating and Cooling  
Industrial Applications



Moving > Water



# Uponor PP-RCT Table of Contents

<b>Table of Contents</b>	<b>1</b>
<b>Pipe</b>	<b>3</b>
Mechanical Pipe	3
Hot Potable Pipe	4
Cold Potable Pipe	4
<b>Couplings</b>	<b>5</b>
<b>Crossovers</b>	<b>5</b>
<b>90 Elbows</b>	<b>6</b>
90 Elbows – Socket Fusion	6
90 Street Elbows – Socket Fusion	6
90 Elbows – Fabricated – Mechanical – Butt Fusion	7
90 Elbows – Fabricated – Short Radius – Mechanical – Butt Fusion	7
90 Elbows – Fabricated – Hot Potable – Butt Fusion	8
90 Elbows – Fabricated – Short Radius – Hot Potable – Butt Fusion	8
90 Elbows – Fabricated – Cold Potable – Butt Fusion	8
90 Elbows – Fabricated – Short Radius – Cold Potable – Butt Fusion	8
<b>45 Elbows</b>	<b>9</b>
45 Elbows – Socket Fusion	9
45 Street Elbows – Socket Fusion	9
45 Elbows – Fabricated – Mechanical – Butt Fusion	10
45 Elbows – Fabricated – Short Radius – Mechanical – Butt Fusion	10
45 Elbows – Fabricated – Hot Potable – Butt Fusion	11
45 Elbows – Fabricated – Short Radius – Hot Potable – Butt Fusion	11
45 Elbows – Fabricated – Cold Potable – Butt Fusion	11
45 Elbows – Fabricated – Short Radius – Cold Potable – Butt Fusion	11
<b>Tees</b>	<b>12</b>
Tees – Socket Fusion	12
Tees – Fabricated – Mechanical – Butt Fusion	12
Tees – Fabricated – Hot Potable – Butt Fusion	13
Tees – Fabricated – Cold Potable – Butt Fusion	13
<b>Reducing Tees</b>	<b>14</b>
Reducing Tees – Socket Fusion	14
Reducing Tees – Fabricated – Mechanical – Butt to Socket Fusion	15
Reducing Tees – Fabricated – Mechanical – Butt Fusion	16
Reducing Tees – Fabricated – Hot Potable – Butt to Socket Fusion	17
Reducing Tees – Fabricated – Hot Potable – Butt Fusion	17
Reducing Tees – Fabricated – Cold Potable – Butt to Socket Fusion	17
Reducing Tees – Fabricated – Cold Potable – Butt Fusion	17

# Uponor PP-RCT Table of Contents

<b>Fitting Reducers</b> .....	<b>18</b>
Fitting Reducers – Socket Fusion.....	18
Reducers – Molded – Butt to Socket Fusion .....	19
Reducers – Molded – Butt Fusion .....	19
<b>End Caps</b> .....	<b>20</b>
End Caps – Socket Fusion.....	20
End Caps – Molded – Butt Fusion.....	20
<b>Flange Adapters</b> .....	<b>21</b>
Flange Adapters – Socket Fusion.....	21
Flange Adapters – Molded – Butt Fusion.....	21
<b>Flange Rings</b> .....	<b>22</b>
<b>Saddles</b> .....	<b>23</b>
<b>Transition Saddles</b> .....	<b>25</b>
Transition Saddles – Female NPT – Outlet Fusion .....	25
Transition Saddles – Lead-Free Female NPT – Outlet Fusion.....	26
Transition Saddles – Male NPT – Outlet Fusion .....	27
Transition Saddles – Lead-Free ProPEX® – Outlet Fusion .....	27
<b>Transition Adapters</b> .....	<b>28</b>
Transition Adapters – Female NPT – Socket Fusion.....	28
Transition Adapters – Lead-Free Female NPT – Socket Fusion.....	28
Transition Adapters – Male NPT – Socket Fusion.....	29
Transition Adapters – Lead-Free Male NPT – Socket Fusion.....	29
Transition Adapters – Lead-Free ProPEX – Socket Fusion .....	29
<b>Brass Unions</b> .....	<b>30</b>
<b>Repair Plugs</b> .....	<b>30</b>
<b>Marking Guides</b> .....	<b>30</b>

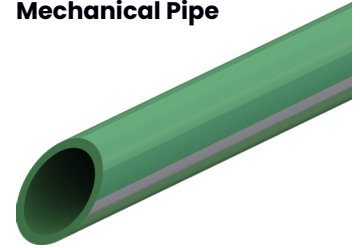
## Pipe

**Material:** PP-RCT with fiber composite layer

**Identification:** SDR 7.4 and SDR 9, green with gray stripes; SDR 11 and SDR 17.6, solid green

**Applications:** Heating, cooling, and industrial

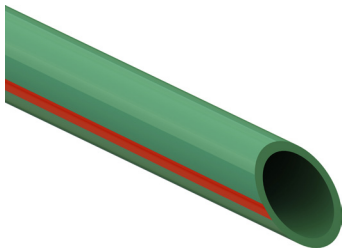
### Mechanical Pipe



Part No.	Part Description	Pkg. Qty.
<b>SDR 7.4</b>		
PR7231350	½" Uponor PP-RCT Mechanical Pipe, SDR 7.4 with Fiber, 13-ft. straight length	25
PR7231375	¾" Uponor PP-RCT Mechanical Pipe, SDR 7.4 with Fiber, 13-ft. straight length	20
<b>SDR 9</b>		
PR9231310	1" Uponor PP-RCT Mechanical Pipe, SDR 9 with Fiber, 13-ft. straight length	14
PR9231313	1¼" Uponor PP-RCT Mechanical Pipe, SDR 9 with Fiber, 13-ft. straight length	10
PR9231315	1½" Uponor PP-RCT Mechanical Pipe, SDR 9 with Fiber, 13-ft. straight length	8
PR9231320	2" Uponor PP-RCT Mechanical Pipe, SDR 9 with Fiber, 13-ft. straight length	5
PR9231925	2½" Uponor PP-RCT Mechanical Pipe, SDR 9 with Fiber, 19-ft. straight length	3
PR9231930	3" Uponor PP-RCT Mechanical Pipe, SDR 9 with Fiber, 19-ft. straight length	2
PR9231940	4" Uponor PP-RCT Mechanical Pipe, SDR 9 with Fiber, 19-ft. straight length	1
PR9231960	6" Uponor PP-RCT Mechanical Pipe, SDR 9 with Fiber, 19-ft. straight length	1
PR9231980	8" Uponor PP-RCT Mechanical Pipe, SDR 9 with Fiber, 19-ft. straight length	1
PR92319100	10" Uponor PP-RCT Mechanical Pipe, SDR 9 with Fiber, 19-ft. straight length	1
PR92319120	12" Uponor PP-RCT Mechanical Pipe, SDR 9 with Fiber, 19-ft. straight length	1
<b>SDR 11</b>		
PR11231310	1" Uponor PP-RCT Mechanical Pipe, SDR 11 with Fiber, 13-ft. straight length	14
PR11231313	1¼" Uponor PP-RCT Mechanical Pipe, SDR 11 with Fiber, 13-ft. straight length	10
PR11231315	1½" Uponor PP-RCT Mechanical Pipe, SDR 11 with Fiber, 13-ft. straight length	8
PR11231320	2" Uponor PP-RCT Mechanical Pipe, SDR 11 with Fiber, 13-ft. straight length	5
PR11231925	2½" Uponor PP-RCT Mechanical Pipe, SDR 11 with Fiber, 19-ft. straight length	3
PR11231930	3" Uponor PP-RCT Mechanical Pipe, SDR 11 with Fiber, 19-ft. straight length	2
PR11231940	4" Uponor PP-RCT Mechanical Pipe, SDR 11 with Fiber, 19-ft. straight length	1
PR11231960	6" Uponor PP-RCT Mechanical Pipe, SDR 11 with Fiber, 19-ft. straight length	1
PR11231980	8" Uponor PP-RCT Mechanical Pipe, SDR 11 with Fiber, 19-ft. straight length	1
PR112319100	10" Uponor PP-RCT Mechanical Pipe, SDR 11 with Fiber, 19-ft. straight length	1
PR112319120	12" Uponor PP-RCT Mechanical Pipe, SDR 11 with Fiber, 19-ft. straight length	1
<b>SDR 17.6</b>		
PR17231940	4" Uponor PP-RCT Mechanical Pipe, SDR 17.6 with Fiber, 19-ft. straight length	1
PR17231960	6" Uponor PP-RCT Mechanical Pipe, SDR 17.6 with Fiber, 19-ft. straight length	1
PR17231980	8" Uponor PP-RCT Mechanical Pipe, SDR 17.6 with Fiber, 19-ft. straight length	1
PR172319100	10" Uponor PP-RCT Mechanical Pipe, SDR 17.6 with Fiber, 19-ft. straight length	1
PR172319120	12" Uponor PP-RCT Mechanical Pipe, SDR 17.6 with Fiber, 19-ft. straight length	1

# Uponor PP-RCT Pipe

## Hot Potable Pipe



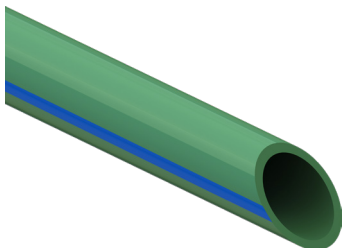
**Material:** PP-RCT with fiber composite layer

**Identification:** SDR 7.4 and SDR 9, green with red stripes

**Applications:** Hot potable water

Part No.	Part Description	Pkg. Qty.
<b>SDR 7.4</b>		
PR7221350	½" Uponor PP-RCT Hot Potable Pipe, SDR 7.4 with Fiber, 13-ft. straight length	25
PR7221375	¾" Uponor PP-RCT Hot Potable Pipe, SDR 7.4 with Fiber, 13-ft. straight length	20
<b>SDR 9</b>		
PR9221310	1" Uponor PP-RCT Hot Potable Pipe, SDR 9 with Fiber, 13-ft. straight length	14
PR9221313	1¼" Uponor PP-RCT Hot Potable Pipe, SDR 9 with Fiber, 13-ft. straight length	10
PR9221315	1½" Uponor PP-RCT Hot Potable Pipe, SDR 9 with Fiber, 13-ft. straight length	8
PR9221320	2" Uponor PP-RCT Hot Potable Pipe, SDR 9 with Fiber, 13-ft. straight length	5
PR9221925	2½" Uponor PP-RCT Hot Potable Pipe, SDR 9 with Fiber, 19-ft. straight length	3
PR9221930	3" Uponor PP-RCT Hot Potable Pipe, SDR 9 with Fiber, 19-ft. straight length	2
PR9221940	4" Uponor PP-RCT Hot Potable Pipe, SDR 9 with Fiber, 19-ft. straight length	1
PR9221960	6" Uponor PP-RCT Hot Potable Pipe, SDR 9 with Fiber, 19-ft. straight length	1
PR9221980	8" Uponor PP-RCT Hot Potable Pipe, SDR 9 with Fiber, 19-ft. straight length	1

## Cold Potable Pipe



**Material:** PP-RCT

**Identification:** SDR 7.4 and SDR 11, green with blue stripes

**Applications:** Cold potable water

Part No.	Part Description	Pkg. Qty.
<b>SDR 7.4</b>		
PR72213500	½" Uponor PP-RCT Cold Potable Pipe, SDR 7.4, 13-ft. straight length	25
PR72213750	¾" Uponor PP-RCT Cold Potable Pipe, SDR 7.4, 13-ft. straight length	20
<b>SDR 11</b>		
PR11221310	1" Uponor PP-RCT Cold Potable Pipe, SDR 11, 13-ft. straight length	14
PR11221313	1¼" Uponor PP-RCT Cold Potable Pipe, SDR 11, 13-ft. straight length	10
PR11221315	1½" Uponor PP-RCT Cold Potable Pipe, SDR 11, 13-ft. straight length	8
PR11221320	2" Uponor PP-RCT Cold Potable Pipe, SDR 11, 13-ft. straight length	5
PR11221925	2½" Uponor PP-RCT Cold Potable Pipe, SDR 11, 19-ft. straight length	3
PR11221930	3" Uponor PP-RCT Cold Potable Pipe, SDR 11, 19-ft. straight length	2
PR11221940	4" Uponor PP-RCT Cold Potable Pipe, SDR 11, 19-ft. straight length	1
PR11221960	6" Uponor PP-RCT Cold Potable Pipe, SDR 11, 19-ft. straight length	1
PR11221980	8" Uponor PP-RCT Cold Potable Pipe, SDR 11, 19-ft. straight length	1

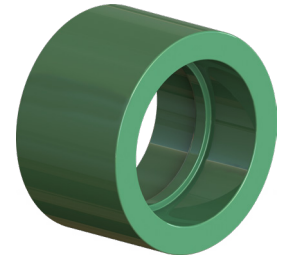
# Uponor PP-RCT Products

## Couplings

The following parts are compatible with SDR 7.4, SDR 9, SDR 11, and SDR 17.6 potable and mechanical piping systems.

Part No.	Part Description	Pkg. Qty.
PR4775050	Uponor PP-RCT Coupling, ½" x ½"	30
PR4777575	Uponor PP-RCT Coupling, ¾" x ¾"	25
PR4771010	Uponor PP-RCT Coupling, 1" x 1"	20
PR4771313	Uponor PP-RCT Coupling, 1¼" x 1¼"	10
PR4771515	Uponor PP-RCT Coupling, 1½" x 1½"	6
PR4772020	Uponor PP-RCT Coupling, 2" x 2"	4
PR4772525	Uponor PP-RCT Coupling, 2½" x 2½"	2
PR4773030	Uponor PP-RCT Coupling, 3" x 3"	1
PR4774040	Uponor PP-RCT Coupling, 4" x 4"	1

### Couplings (Socket Fusion)

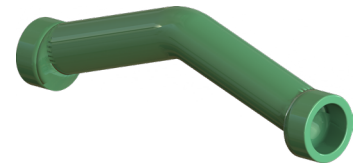


## Crossovers

The following parts are compatible with SDR 7.4, SDR 9, SDR 11, and SDR 17.6 potable and mechanical piping systems.

Part No.	Part Description	Pkg. Qty.
PR4485050	Uponor PP-RCT Crossover, Molded, ½" x ½"	10
PR4487575	Uponor PP-RCT Crossover, Molded, ¾" x ¾"	10
PR4481010	Uponor PP-RCT Crossover, Molded, 1" x 1"	5

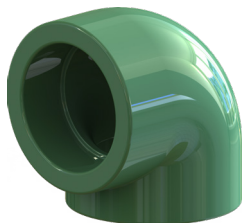
### Crossovers (Socket Fusion)



# Uponor PP-RCT 90 Elbows

## 90 Elbows

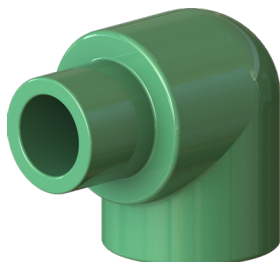
**90 Elbows**  
(Socket Fusion)



The following parts are compatible with SDR 7.4, SDR 9, SDR 11, and SDR 17.6 potable and mechanical piping systems.

Part No.	Part Description	Pkg. Qty.
PR4769050	Uponor PP-RCT 90 Elbow, ½" x ½"	30
PR4769075	Uponor PP-RCT 90 Elbow, ¾" x ¾"	25
PR4769010	Uponor PP-RCT 90 Elbow, 1" x 1"	20
PR4769013	Uponor PP-RCT 90 Elbow, 1¼" x 1¼"	10
PR4769015	Uponor PP-RCT 90 Elbow, 1½" x 1½"	6
PR4769020	Uponor PP-RCT 90 Elbow, 2" x 2"	4
PR4769025	Uponor PP-RCT 90 Elbow, 2½" x 2½"	1
PR4769030	Uponor PP-RCT 90 Elbow, 3" x 3"	1
PR4769040	Uponor PP-RCT 90 Elbow, 4" x 4"	1

**90 Street Elbows**  
(Socket Fusion)



The following parts are compatible with SDR 7.4, SDR 9, SDR 11, and SDR 17.6 potable and mechanical piping systems.

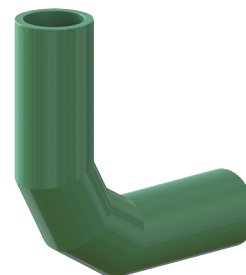
Part No.	Part Description	Pkg. Qty.
PR4439050	Uponor PP-RCT 90 Street Elbow, ½" x ½"	10
PR4439075	Uponor PP-RCT 90 Street Elbow, ¾" x ¾"	10
PR4439010	Uponor PP-RCT 90 Street Elbow, 1" x 1"	10



# Uponor PP-RCT 90 Elbows

Part No.	Part Description	Pkg. Qty.
<b>SDR 9</b>		
PR947690600	Uponor PP-RCT 90 Elbow, Mechanical, 6" x 6", SDR 9	1
PR947690800	Uponor PP-RCT 90 Elbow, Mechanical, 8" x 8", SDR 9	1
PR947690100	Uponor PP-RCT 90 Elbow, Mechanical, 10" x 10", SDR 9	1
PR94769012	Uponor PP-RCT 90 Elbow, Mechanical, 12" x 12", SDR 9	1
<b>SDR 11</b>		
PR1147690600	Uponor PP-RCT 90 Elbow, Mechanical, 6" x 6", SDR 11	1
PR1147690800	Uponor PP-RCT 90 Elbow, Mechanical, 8" x 8", SDR 11	1
PR1147690100	Uponor PP-RCT 90 Elbow, Mechanical, 10" x 10", SDR 11	1
PR94769012	Uponor PP-RCT 90 Elbow, Mechanical, 12" x 12", SDR 11	1
PR114769012	Uponor PP-RCT 90 Elbow, Mechanical, 12" x 12", SDR 11	1
<b>SDR 17.6</b>		
PR174769060	Uponor PP-RCT 90 Elbow, Mechanical, 6" x 6", SDR 17.6	1
PR174769080	Uponor PP-RCT 90 Elbow, Mechanical, 8" x 8", SDR 17.6	1
PR174769010	Uponor PP-RCT 90 Elbow, Mechanical, 10" x 10", SDR 17.6	1
PR174769012	Uponor PP-RCT 90 Elbow, Mechanical, 12" x 12", SDR 17.6	1

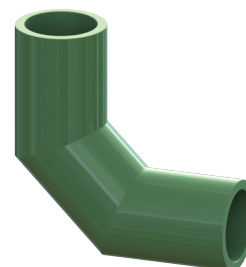
**90 Elbows – Fabricated – Mechanical (Butt Fusion)**



Uponor PP-RCT 90 Elbows

Part No.	Part Description	Pkg. Qty.
<b>SDR 9</b>		
PR94769061	Uponor PP-RCT 90 Elbow, Mechanical, 6" x 6", SDR 9, Short Radius	2
PR94769081	Uponor PP-RCT 90 Elbow, Mechanical, 8" x 8", SDR 9, Short Radius	1
PR94769010	Uponor PP-RCT 90 Elbow, Mechanical, 10" x 10", SDR 9, Short Radius	1
PR947690120	Uponor PP-RCT 90 Elbow, Mechanical, 12" x 12", SDR 9, Short Radius	1
<b>SDR 11</b>		
PR114769061	Uponor PP-RCT 90 Elbow, Mechanical, 6" x 6", SDR 11, Short Radius	2
PR114769081	Uponor PP-RCT 90 Elbow, Mechanical, 8" x 8", SDR 11, Short Radius	1
PR114769010	Uponor PP-RCT 90 Elbow, Mechanical, 10" x 10", SDR 11, Short Radius	1
PR1147690120	Uponor PP-RCT 90 Elbow, Mechanical, 12" x 12", SDR 11, Short Radius	1
<b>SDR 17.6</b>		
PR1747690600	Uponor PP-RCT 90 Elbow, Mechanical, 6" x 6", SDR 17.6, Short Radius	2
PR1747690800	Uponor PP-RCT 90 Elbow, Mechanical, 8" x 8", SDR 17.6, Short Radius	1
PR1747690100	Uponor PP-RCT 90 Elbow, Mechanical, 10" x 10", SDR 17.6, Short Radius	1
PR1747690120	Uponor PP-RCT 90 Elbow, Mechanical, 12" x 12", SDR 17.6, Short Radius	1

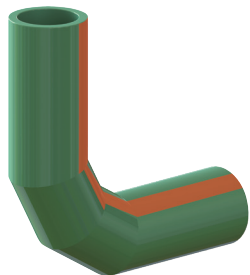
**90 Elbows – Fabricated – Short Radius – Mechanical (Butt Fusion)**



# Uponor PP-RCT 90 Elbows

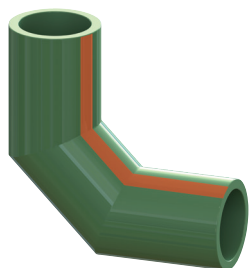
Uponor PP-RCT 90 Elbows

## 90 Elbows – Fabricated – Hot Potable (Butt Fusion)



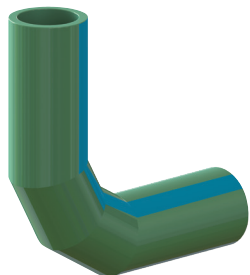
Part No.	Part Description	Pkg. Qty.
<b>SDR 9</b>		
PR94769060	Uponor PP-RCT 90 Elbow, Hot Potable, 6" x 6", SDR 9	1
PR94769080	Uponor PP-RCT 90 Elbow, Hot Potable, 8" x 8", SDR 9	1

## 90 Elbows – Fabricated – Short Radius – Hot Potable (Butt Fusion)



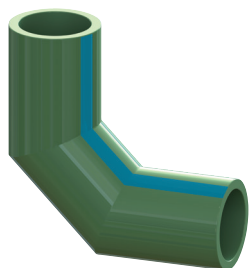
Part No.	Part Description	Pkg. Qty.
<b>SDR 9</b>		
PR94769063	Uponor PP-RCT 90 Elbow, Hot Potable, 6" x 6", SDR 9, Short Radius	1
PR94769083	Uponor PP-RCT 90 Elbow, Hot Potable, 8" x 8", SDR 9, Short Radius	1

## 90 Elbows – Fabricated – Cold Potable (Butt Fusion)



Part No.	Part Description	Pkg. Qty.
<b>SDR 11</b>		
PR114769060	Uponor PP-RCT 90 Elbow, Cold Potable, 6" x 6", SDR 11	1
PR114769080	Uponor PP-RCT 90 Elbow, Cold Potable, 8" x 8", SDR 11	1

## 90 Elbows – Fabricated – Short Radius – Cold Potable (Butt Fusion)



Part No.	Part Description	Pkg. Qty.
<b>SDR 11</b>		
PR114769062	Uponor PP-RCT 90 Elbow, Cold Potable, 6" x 6", SDR 11, Short Radius	1
PR114769082	Uponor PP-RCT 90 Elbow, Cold Potable, 8" x 8", SDR 11, Short Radius	1

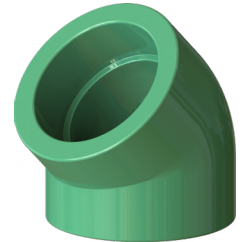
# Uponor PP-RCT 45 Elbows

## 45 Elbows

The following parts are compatible with SDR 7.4, SDR 9, SDR 11, and SDR 17.6 potable and mechanical piping systems.

Part No.	Part Description	Pkg. Qty.
PR4764550	Uponor PP-RCT 45 Elbow, ½" x ½"	30
PR4764575	Uponor PP-RCT 45 Elbow, ¾" x ¾"	25
PR4764510	Uponor PP-RCT 45 Elbow, 1" x 1"	20
PR4764513	Uponor PP-RCT 45 Elbow, 1¼" x 1¼"	10
PR4764515	Uponor PP-RCT 45 Elbow, 1½" x 1½"	6
PR4764520	Uponor PP-RCT 45 Elbow, 2" x 2"	4
PR4764525	Uponor PP-RCT 45 Elbow, 2½" x 2½"	1
PR4764530	Uponor PP-RCT 45 Elbow, 3" x 3"	1
PR4764540	Uponor PP-RCT 45 Elbow, 4" x 4"	1

### 45 Elbows (Socket Fusion)



The following parts are compatible with SDR 7.4, SDR 9, SDR 11, and SDR 17.6 potable and mechanical piping systems.

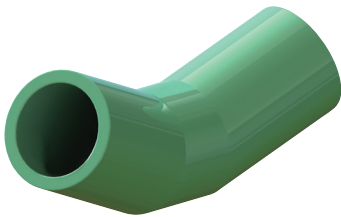
Part No.	Part Description	Pkg. Qty.
PR4434550	Uponor PP-RCT 45 Street Elbow, ½" x ½"	10
PR4434575	Uponor PP-RCT 45 Street Elbow, ¾" x ¾"	10
PR4434510	Uponor PP-RCT 45 Street Elbow, 1" x 1"	10

### 45 Street Elbows (Socket Fusion)



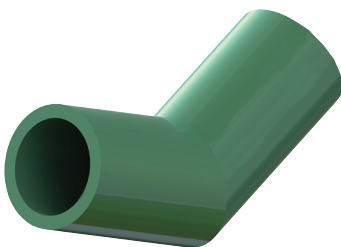
# Uponor PP-RCT 45 Elbows

## 45 Elbows – Fabricated – Mechanical (Butt Fusion)



Part No.	Part Description	Pkg. Qty.
<b>SDR 9</b>		
PR947645600	Uponor PP-RCT 45 Elbow, Mechanical, 6" x 6", SDR 9	1
PR94764510	Uponor PP-RCT 45 Elbow, Mechanical, 10" x 10", SDR 9	1
PR94764512	Uponor PP-RCT 45 Elbow, Mechanical, 12" x 12", SDR 9	1
<b>SDR 11</b>		
PR1147645600	Uponor PP-RCT 45 Elbow, Mechanical, 6" x 6", SDR 11	1
PR1147645800	Uponor PP-RCT 45 Elbow, Mechanical, 8" x 8", SDR 11	1
PR114764510	Uponor PP-RCT 45 Elbow, Mechanical, 10" x 10", SDR 11	1
PR114764512	Uponor PP-RCT 45 Elbow, Mechanical, 12" x 12", SDR 11	1
<b>SDR 17.6</b>		
PR174764560	Uponor PP-RCT 45 Elbow, Mechanical, 6" x 6", SDR 17.6	1
PR174764580	Uponor PP-RCT 45 Elbow, Mechanical, 8" x 8", SDR 17.6	1
PR174764510	Uponor PP-RCT 45 Elbow, Mechanical, 10" x 10", SDR 17.6	1
PR174764512	Uponor PP-RCT 45 Elbow, Mechanical, 12" x 12", SDR 17.6	1

## 45 Elbows – Fabricated – Short Radius – Mechanical (Butt Fusion)

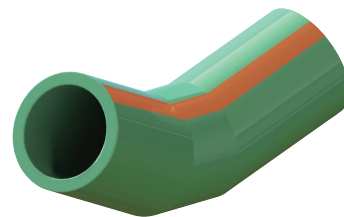


Part No.	Part Description	Pkg. Qty.
<b>SDR 9</b>		
PR94764561	Uponor PP-RCT 45 Elbow, Mechanical, 6" x 6", SDR 9, Short Radius	2
PR94764581	Uponor PP-RCT 45 Elbow, Mechanical, 8" x 8", SDR 9, Short Radius	1
PR947645100	Uponor PP-RCT 45 Elbow, Mechanical, 10" x 10", SDR 9, Short Radius	1
PR947645120	Uponor PP-RCT 45 Elbow, Mechanical, 12" x 12", SDR 9, Short Radius	1
<b>SDR 11</b>		
PR114764561	Uponor PP-RCT 45 Elbow, Mechanical, 6" x 6", SDR 11, Short Radius	2
PR114764581	Uponor PP-RCT 45 Elbow, Mechanical, 8" x 8", SDR 11, Short Radius	1
PR1147645100	Uponor PP-RCT 45 Elbow, Mechanical, 10" x 10", SDR 11, Short Radius	1
PR1147645120	Uponor PP-RCT 45 Elbow, Mechanical, 12" x 12", SDR 11, Short Radius	1
<b>SDR 17.6</b>		
PR1747645600	Uponor PP-RCT 45 Elbow, Mechanical, 6" x 6", SDR 17.6, Short Radius	2
PR1747645800	Uponor PP-RCT 45 Elbow, Mechanical, 8" x 8", SDR 17.6, Short Radius	1
PR1747645100	Uponor PP-RCT 45 Elbow, Mechanical, 10" x 10", SDR 17.6, Short Radius	1
PR1747645120	Uponor PP-RCT 45 Elbow, Mechanical, 12" x 12", SDR 17.6, Short Radius	1

# Uponor PP-RCT 45 Elbows

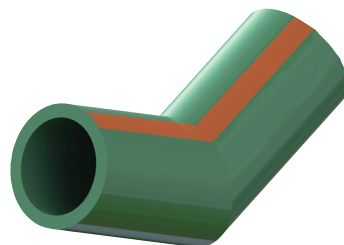
Part No.	Part Description	Pkg. Qty.
<b>SDR 9</b>		
PR94764560	Uponor PP-RCT 45 Elbow, Hot Potable, 6" x 6", SDR 9	2
PR94764580	Uponor PP-RCT 45 Elbow, Hot Potable, 8" x 8", SDR 9	1

**45 Elbows – Fabricated – Hot Potable**  
(Butt Fusion)



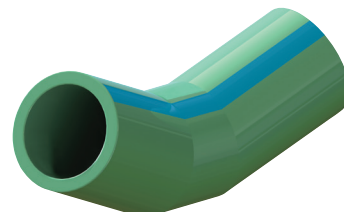
Part No.	Part Description	Pkg. Qty.
<b>SDR 9</b>		
PR94764563	Uponor PP-RCT 45 Elbow, Hot Potable, 6" x 6", SDR 9, Short Radius	1
PR94764583	Uponor PP-RCT 45 Elbow, Hot Potable, 8" x 8", SDR 9, Short Radius	1

**45 Elbows – Fabricated – Short Radius – Hot Potable**  
(Butt Fusion)



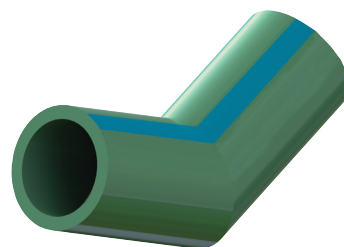
Part No.	Part Description	Pkg. Qty.
<b>SDR 11</b>		
PR114764560	Uponor PP-RCT 45 Elbow, Cold Potable, 6" x 6", SDR 11	1
PR114764580	Uponor PP-RCT 45 Elbow, Cold Potable, 8" x 8", SDR 11	1

**45 Elbows – Fabricated – Cold Potable**  
(Butt Fusion)



Part No.	Part Description	Pkg. Qty.
<b>SDR 11</b>		
PR114764562	Uponor PP-RCT 45 Elbow, Cold Potable, 6" x 6", SDR 11, Short Radius	1
PR114764582	Uponor PP-RCT 45 Elbow, Cold Potable, 8" x 8", SDR 11, Short Radius	1

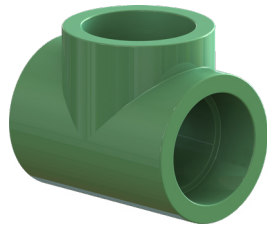
**45 Elbows – Fabricated – Short Radius – Cold Potable**  
(Butt Fusion)



# Uponor PP-RCT Tees

## Tees

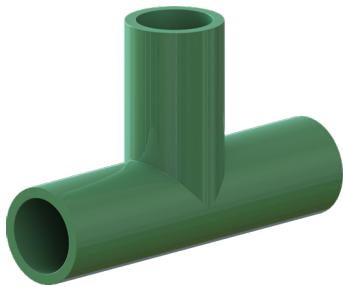
### Tees (Socket Fusion)



The following parts are compatible with SDR 7.4, SDR 9, SDR 11, and SDR 17.6 potable and mechanical piping systems.

Part No.	Part Description	Pkg. Qty.
PR4755050	Uponor PP-RCT Tee, ½" x ½" x ½"	30
PR4757575	Uponor PP-RCT Tee, ¾" x ¾" x ¾"	25
PR4751000	Uponor PP-RCT Tee, 1" x 1" x 1"	20
PR4751250	Uponor PP-RCT Tee, 1¼" x 1¼" x 1¼"	10
PR4751500	Uponor PP-RCT Tee, 1½" x 1½" x 1½"	6
PR4752000	Uponor PP-RCT Tee, 2" x 2" x 2"	4
PR4752500	Uponor PP-RCT Tee, 2½" x 2½" x 2½"	1
PR4753000	Uponor PP-RCT Tee, 3" x 3" x 3"	1
PR4754000	Uponor PP-RCT Tee, 4" x 4" x 4"	1

### Tees – Fabricated – Mechanical (Butt Fusion)

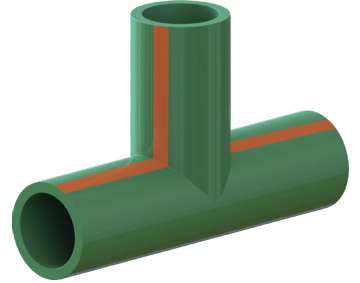


Part No.	Part Description	Pkg. Qty.
<b>SDR 9</b>		
PR9475600	Uponor PP-RCT Tee, Mechanical, 6" x 6" x 6", SDR 9	1
PR9475800	Uponor PP-RCT Tee, Mechanical, 8" x 8" x 8", SDR 9	1
PR9475100	Uponor PP-RCT Tee, Mechanical, 10" x 10" x 10", SDR 9	1
PR9475120	Uponor PP-RCT Tee, Mechanical, 12" x 12" x 12", SDR 9	1
<b>SDR 11</b>		
PR11475600	Uponor PP-RCT Tee, Mechanical, 6" x 6" x 6", SDR 11	1
PR11475800	Uponor PP-RCT Tee, Mechanical, 8" x 8" x 8", SDR 11	1
PR11475100	Uponor PP-RCT Tee, Mechanical, 10" x 10" x 10", SDR 11	1
PR11475120	Uponor PP-RCT Tee, Mechanical, 12" x 12" x 12", SDR 11	1
<b>SDR 17.6</b>		
PR17475600	Uponor PP-RCT Tee, Mechanical, 6" x 6" x 6", SDR 17.6	1
PR17475800	Uponor PP-RCT Tee, Mechanical, 8" x 8" x 8", SDR 17.6	1
PR17475100	Uponor PP-RCT Tee, Mechanical, 10" x 10" x 10", SDR 17.6	1
PR17475120	Uponor PP-RCT Tee, Mechanical, 12" x 12" x 12", SDR 17.6	1

# Uponor PP-RCT Tees

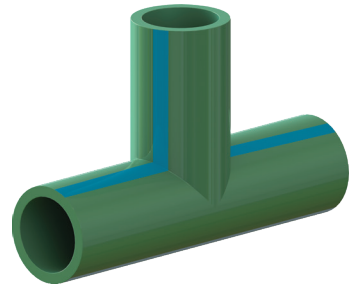
Part No.	Part Description	Pkg. Qty.
<b>SDR 9</b>		
PR947560	Uponor PP-RCT Tee, Hot Potable, 6" x 6" x 6", SDR 9	1
PR947580	Uponor PP-RCT Tee, Hot Potable, 8" x 8" x 8", SDR 9	1

**Tees – Fabricated –  
Hot Potable**  
(Butt Fusion)



Part No.	Part Description	Pkg. Qty.
<b>SDR 11</b>		
PR1147560	Uponor PP-RCT Tee, Cold Potable, 6" x 6" x 6", SDR 11	1
PR1147580	Uponor PP-RCT Tee, Cold Potable, 8" x 8" x 8", SDR 11	1

**Tees – Fabricated –  
Cold Potable**  
(Butt Fusion)



# Uponor PP-RCT Reducing Tees

## Reducing Tees

**Reducing Tees**  
(Socket Fusion)



The following parts are compatible with SDR 7.4, SDR 9, SDR 11, and SDR 17.6 potable and mechanical piping systems.

Part No.	Part Description	Pkg. Qty.
PR4755075	Uponor PP-RCT Reducing Tee, ½" x ½" x ¾"	25
PR4757550	Uponor PP-RCT Reducing Tee, ¾" x ¾" x 1"	25
PR4751550	Uponor PP-RCT Reducing Tee, 1" x ½" x ½"	20
PR4751775	Uponor PP-RCT Reducing Tee, 1" x ¾" x ¾"	20
PR4751150	Uponor PP-RCT Reducing Tee, 1" x 1" x ½"	20
PR4751175	Uponor PP-RCT Reducing Tee, 1" x 1" x ¾"	20
PR4751350	Uponor PP-RCT Reducing Tee, 1¼" x 1¼" x ½"	10
PR4751375	Uponor PP-RCT Reducing Tee, 1¼" x 1¼" x ¾"	10
PR4751331	Uponor PP-RCT Reducing Tee, 1¼" x 1¼" x 1"	10
PR4751575	Uponor PP-RCT Reducing Tee, 1½" x 1½" x ¾"	6
PR4751551	Uponor PP-RCT Reducing Tee, 1½" x 1½" x 1"	6
PR4751553	Uponor PP-RCT Reducing Tee, 1½" x 1½" x 1¼"	6
PR4752275	Uponor PP-RCT Reducing Tee, 2" x 2" x ¾"	4
PR4752210	Uponor PP-RCT Reducing Tee, 2" x 2" x 1"	4
PR4752213	Uponor PP-RCT Reducing Tee, 2" x 2" x 1¼"	4
PR4752215	Uponor PP-RCT Reducing Tee, 2" x 2" x 1½"	4
PR4752575	Uponor PP-RCT Reducing Tee, 2½" x 2½" x ¾"	1
PR4752510	Uponor PP-RCT Reducing Tee, 2½" x 2½" x 1"	1
PR4752513	Uponor PP-RCT Reducing Tee, 2½" x 2½" x 1¼"	1
PR4752515	Uponor PP-RCT Reducing Tee, 2½" x 2½" x 1½"	2
PR4752520	Uponor PP-RCT Reducing Tee, 2½" x 2½" x 2"	1
PR4753310	Uponor PP-RCT Reducing Tee, 3" x 3" x 1"	1
PR4753313	Uponor PP-RCT Reducing Tee, 3" x 3" x 1¼"	1
PR4753315	Uponor PP-RCT Reducing Tee, 3" x 3" x 1½"	1
PR4753320	Uponor PP-RCT Reducing Tee, 3" x 3" x 2"	1
PR4753325	Uponor PP-RCT Reducing Tee, 3" x 3" x 2½"	1
PR4754425	Uponor PP-RCT Reducing Tee, 4" x 4" x 2½"	1
PR4754430	Uponor PP-RCT Reducing Tee, 4" x 4" x 3"	1

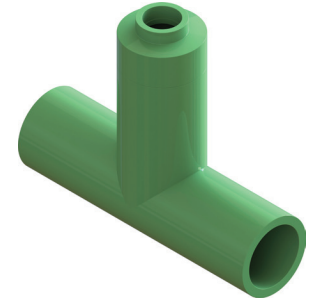


# Uponor PP-RCT Reducing Tees

The SDRs associated with each fitting corresponds to the larger-diameter butt end, and the smaller-diameter socket end is compatible with all SDRs. The following parts are compatible with both mechanical and potable pipe.

**Reducing Tees –  
Fabricated – Mechanical**  
(Butt to Socket Fusion)

Part No.	Part Description	Pkg. Qty.
<b>SDR 9</b>		
PR94856625	Uponor PP-RCT Reducing Tee, Mechanical, 6" x 6" x 2½", SDR 9, Butt to Socket Fusion	1
PR94856630	Uponor PP-RCT Reducing Tee, Mechanical, 6" x 6" x 3", SDR 9, Butt to Socket Fusion	1
PR94858825	Uponor PP-RCT Reducing Tee, Mechanical, 8" x 8" x 2½", SDR 9, Butt to Socket Fusion	1
PR94858830	Uponor PP-RCT Reducing Tee, Mechanical, 8" x 8" x 3", SDR 9, Butt to Socket Fusion	1
PR9485101025	Uponor PP-RCT Reducing Tee, Mechanical, 10" x 10" x 2½", SDR 9, Butt to Socket Fusion	1
PR9485101030	Uponor PP-RCT Reducing Tee, Mechanical, 10" x 10" x 3", SDR 9, Butt to Socket Fusion	1
PR9485101040	Uponor PP-RCT Reducing Tee, Mechanical, 10" x 10" x 4", SDR 9, Butt to Socket Fusion	1
PR9485121230	Uponor PP-RCT Reducing Tee, Mechanical, 12" x 12" x 3", SDR 9, Butt to Socket Fusion	1
PR9485121240	Uponor PP-RCT Reducing Tee, Mechanical, 12" x 12" x 4", SDR 9, Butt to Socket Fusion	1
<b>SDR 11</b>		
PR114856625	Uponor PP-RCT Reducing Tee, Mechanical, 6" x 6" x 2½", SDR 11, Butt to Socket Fusion	1
PR114856630	Uponor PP-RCT Reducing Tee, Mechanical, 6" x 6" x 3", SDR 11, Butt to Socket Fusion	1
PR114858825	Uponor PP-RCT Reducing Tee, Mechanical, 8" x 8" x 2½", SDR 11, Butt to Socket Fusion	1
PR114858830	Uponor PP-RCT Reducing Tee, Mechanical, 8" x 8" x 3", SDR 11, Butt to Socket Fusion	1
PR114851025	Uponor PP-RCT Reducing Tee, Mechanical, 10" x 10" x 2½", SDR 11, Butt to Socket Fusion	1
PR114851030	Uponor PP-RCT Reducing Tee, Mechanical, 10" x 10" x 3", SDR 11, Butt to Socket Fusion	1
PR114851040	Uponor PP-RCT Reducing Tee, Mechanical, 10" x 10" x 4", SDR 11, Butt to Socket Fusion	1
PR114851230	Uponor PP-RCT Reducing Tee, Mechanical, 12" x 12" x 3", SDR 11, Butt to Socket Fusion	1
PR114851240	Uponor PP-RCT Reducing Tee, Mechanical, 12" x 12" x 4", SDR 11, Butt to Socket Fusion	1
<b>SDR 17.6</b>		
PR174856625	Uponor PP-RCT Reducing Tee, Mechanical, 6" x 6" x 2½", SDR 17.6, Butt to Socket Fusion	1
PR174856630	Uponor PP-RCT Reducing Tee, Mechanical, 6" x 6" x 3", SDR 17.6, Butt to Socket Fusion	1
PR174858825	Uponor PP-RCT Reducing Tee, Mechanical, 8" x 8" x 2½", SDR 17.6, Butt to Socket Fusion	1
PR174858830	Uponor PP-RCT Reducing Tee, Mechanical, 8" x 8" x 3", SDR 17.6, Butt to Socket Fusion	1
PR174851025	Uponor PP-RCT Reducing Tee, Mechanical, 10" x 10" x 2½", SDR 17.6, Butt to Socket Fusion	1
PR174851030	Uponor PP-RCT Reducing Tee, Mechanical, 10" x 10" x 3", SDR 17.6, Butt to Socket Fusion	1
PR174851040	Uponor PP-RCT Reducing Tee, Mechanical, 10" x 10" x 4", SDR 17.6, Butt to Socket Fusion	1
PR174851230	Uponor PP-RCT Reducing Tee, Mechanical, 12" x 12" x 3", SDR 17.6, Butt to Socket Fusion	1
PR174851240	Uponor PP-RCT Reducing Tee, Mechanical, 12" x 12" x 4", SDR 17.6, Butt to Socket Fusion	1



# Uponor PP-RCT Reducing Tees

## Reducing Tees – Fabricated – Mechanical (Butt Fusion)



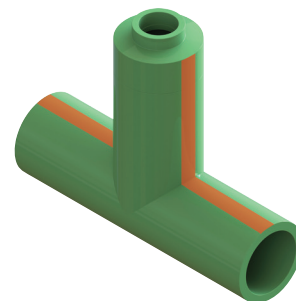
Part No.	Part Description	Pkg. Qty.
<b>SDR 9</b>		
PR947566400	Uponor PP-RCT Reducing Tee, Mechanical, 6" x 6" x 4", SDR 9	1
PR947588400	Uponor PP-RCT Reducing Tee, Mechanical, 8" x 8" x 4", SDR 9	1
PR947588600	Uponor PP-RCT Reducing Tee, Mechanical, 8" x 8" x 6", SDR 9	1
PR9475101060	Uponor PP-RCT Reducing Tee, Mechanical, 10" x 10" x 6", SDR 9	1
PR9475101080	Uponor PP-RCT Reducing Tee, Mechanical, 10" x 10" x 8", SDR 9	1
PR947512128	Uponor PP-RCT Reducing Tee, Mechanical, 12" x 12" x 8", SDR 9	1
PR9475121210	Uponor PP-RCT Reducing Tee, Mechanical, 12" x 12" x 10", SDR 9	1
<b>SDR 11</b>		
PR1147566400	Uponor PP-RCT Reducing Tee, Mechanical, 6" x 6" x 4", SDR 11	1
PR1147588400	Uponor PP-RCT Reducing Tee, Mechanical, 8" x 8" x 4", SDR 11	1
PR1147588600	Uponor PP-RCT Reducing Tee, Mechanical, 8" x 8" x 6", SDR 11	1
PR114751060	Uponor PP-RCT Reducing Tee, Mechanical, 10" x 10" x 6", SDR 11	1
PR114751080	Uponor PP-RCT Reducing Tee, Mechanical, 10" x 10" x 8", SDR 11	1
PR1147512128	Uponor PP-RCT Reducing Tee, Mechanical, 12" x 12" x 8", SDR 11	1
PR114751210	Uponor PP-RCT Reducing Tee, Mechanical, 12" x 12" x 10", SDR 11	1
<b>SDR 17.6</b>		
PR1747566400	Uponor PP-RCT Reducing Tee, Mechanical, 6" x 6" x 4", SDR 17.6	1
PR1747588400	Uponor PP-RCT Reducing Tee, Mechanical, 8" x 8" x 4", SDR 17.6	1
PR174758860	Uponor PP-RCT Reducing Tee, Mechanical, 8" x 8" x 6", SDR 17.6	1
PR174751060	Uponor PP-RCT Reducing Tee, Mechanical, 10" x 10" x 6", SDR 17.6	1
PR174751080	Uponor PP-RCT Reducing Tee, Mechanical, 10" x 10" x 8", SDR 17.6	1
PR1747512128	Uponor PP-RCT Reducing Tee, Mechanical, 12" x 12" x 8", SDR 17.6	1
PR174751210	Uponor PP-RCT Reducing Tee, Mechanical, 12" x 12" x 10", SDR 17.6	1

# Uponor PP-RCT Reducing Tees

The SDRs associated with each fitting corresponds to the larger-diameter butt end, and the smaller-diameter socket end is compatible with all SDRs. The following parts are compatible with both mechanical and potable pipe.

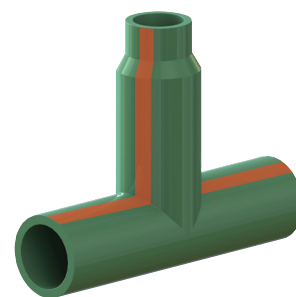
Part No.	Part Description	Pkg. Qty.
<b>SDR 9</b>		
PR948566253	Uponor PP-RCT Reducing Tee, Hot Potable, 6" x 6" x 2½", SDR 9, Butt to Socket Fusion	1
PR94856633	Uponor PP-RCT Reducing Tee, Hot Potable, 6" x 6" x 3", SDR 9, Butt to Socket Fusion	1
PR948588253	Uponor PP-RCT Reducing Tee, Hot Potable, 8" x 8" x 2½", SDR 9, Butt to Socket Fusion	1
PR94858833	Uponor PP-RCT Reducing Tee, Hot Potable, 8" x 8" x 3", SDR 9, Butt to Socket Fusion	1

**Reducing Tees – Fabricated – Hot Potable**  
(Butt to Socket Fusion)



Part No.	Part Description	Pkg. Qty.
<b>SDR 9</b>		
PR94756640	Uponor PP-RCT Reducing Tee, Hot Potable, 6" x 6" x 4", SDR 9	1
PR94758840	Uponor PP-RCT Reducing Tee, Hot Potable, 8" x 8" x 4", SDR 9	1
PR94758860	Uponor PP-RCT Reducing Tee, Hot Potable, 8" x 8" x 6", SDR 9	1

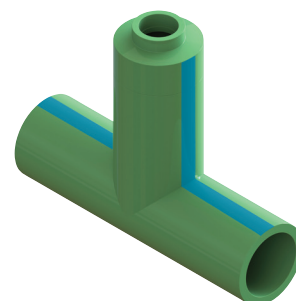
**Reducing Tees – Fabricated – Hot Potable**  
(Butt Fusion)



The SDRs associated with each fitting corresponds to the larger-diameter butt end, and the smaller-diameter socket end is compatible with all SDRs. The following parts are compatible with both mechanical and potable pipe.

Part No.	Part Description	Pkg. Qty.
<b>SDR 11</b>		
PR1148566252	Uponor PP-RCT Reducing Tee, Cold Potable, 6" x 6" x 2½", SDR 11, Butt to Socket Fusion	1
PR114856632	Uponor PP-RCT Reducing Tee, Cold Potable, 6" x 6" x 3", SDR 11, Butt to Socket Fusion	1
PR1148588252	Uponor PP-RCT Reducing Tee, Cold Potable, 8" x 8" x 2½", SDR 11, Butt to Socket Fusion	1
PR114858832	Uponor PP-RCT Reducing Tee, Cold Potable, 8" x 8" x 3", SDR 11, Butt to Socket Fusion	1

**Reducing Tees – Fabricated – Cold Potable**  
(Butt to Socket Fusion)



Part No.	Part Description	Pkg. Qty.
<b>SDR 11</b>		
PR114756640	Uponor PP-RCT Reducing Tee, Cold Potable, 6" x 6" x 4", SDR 11	1
PR114758840	Uponor PP-RCT Reducing Tee, Cold Potable, 8" x 8" x 4", SDR 11	1
PR114758860	Uponor PP-RCT Reducing Tee, Cold Potable, 8" x 8" x 6", SDR 11	1

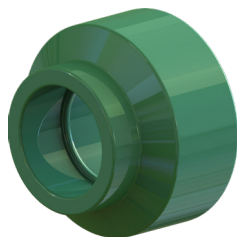
**Reducing Tees – Fabricated – Cold Potable**  
(Butt Fusion)



# Uponor PP-RCT Fitting Reducers

## Fitting Reducers

### Fitting Reducers (Socket Fusion)



Uponor PP-RCT socket fusion fitting reducers have one plain end of the fitting that requires a corresponding coupling in order to make a connection. The other end of the fitting is a socket end in which the pipe is inserted and does not require any additional coupling. The coupling size needed for each fitting is indicated below. Please ensure that the correct coupling is purchased for each fitting reducer.

The following parts are compatible with SDR 7.4, SDR 9, SDR 11, and SDR 17.6 potable and mechanical piping systems.

**Note:** Fitting reducers, where 4" is the larger end, can also be butt fused (using the 4" end). Select the appropriate SDR to match the pipe (for butt fusion).

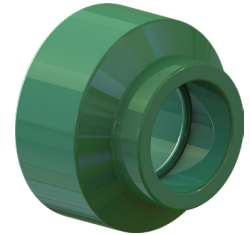
Part No.	Part Description	Coupling Size	Pkg. Qty.
PR4777550	Uponor PP-RCT Fitting Reducer, ¾" x ½"	¾"	30
PR4771050	Uponor PP-RCT Fitting Reducer, 1" x ½"	1"	25
PR4771075	Uponor PP-RCT Fitting Reducer, 1" x ¾"	1"	20
PR4771350	Uponor PP-RCT Fitting Reducer, 1¼" x ½"	1¼"	10
PR4771375	Uponor PP-RCT Fitting Reducer, 1¼" x ¾"	1¼"	10
PR4771310	Uponor PP-RCT Fitting Reducer, 1¼" x 1"	1¼"	10
PR4771550	Uponor PP-RCT Fitting Reducer, 1½" x ½"	1½"	6
PR4771575	Uponor PP-RCT Fitting Reducer, 1½" x ¾"	1½"	6
PR4771510	Uponor PP-RCT Fitting Reducer, 1½" x 1"	1½"	6
PR4771513	Uponor PP-RCT Fitting Reducer, 1½" x 1¼"	1½"	6
PR4772075	Uponor PP-RCT Fitting Reducer, 2" x ¾"	2"	10
PR4772010	Uponor PP-RCT Fitting Reducer, 2" x 1"	2"	10
PR4772013	Uponor PP-RCT Fitting Reducer, 2" x 1¼"	2"	10
PR4772015	Uponor PP-RCT Fitting Reducer, 2" x 1½"	2"	4
PR4772550	Uponor PP-RCT Fitting Reducer, 2½" x ½"	2½"	4
PR4772575	Uponor PP-RCT Fitting Reducer, 2½" x ¾"	2½"	4
PR4772510	Uponor PP-RCT Fitting Reducer, 2½" x 1"	2½"	4
PR4772513	Uponor PP-RCT Fitting Reducer, 2½" x 1¼"	2½"	2
PR4772515	Uponor PP-RCT Fitting Reducer, 2½" x 1½"	2½"	2
PR4772520	Uponor PP-RCT Fitting Reducer, 2½" x 2"	2½"	2
PR4773015	Uponor PP-RCT Fitting Reducer, 3" x 1½"	3"	2
PR4773020	Uponor PP-RCT Fitting Reducer, 3" x 2"	3"	2
PR4773025	Uponor PP-RCT Fitting Reducer, 3" x 2½"	3"	2

# Uponor PP-RCT Fitting Reducers

The SDRs associated with each fitting corresponds to the larger-diameter butt end, and the smaller-diameter socket end is compatible with all SDRs. The following parts are compatible with both mechanical and potable pipe.

## Reducers – Molded (Butt to Socket Fusion)

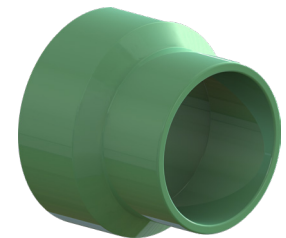
Part No.	Part Description	Pkg. Qty.
<b>SDR 9</b>		
PR94774025	Uponor PP-RCT Fitting Reducer, 4" x 2½", SDR 9	1
PR94774030	Uponor PP-RCT Fitting Reducer, 4" x 3", SDR 9	1
PR94776040	Uponor PP-RCT Reducer, 6" x 4", SDR 9, Butt to Socket Fusion	1
<b>SDR 11</b>		
PR114774025	Uponor PP-RCT Fitting Reducer, 4" x 2½", SDR 11	1
PR114774030	Uponor PP-RCT Fitting Reducer, 4" x 3", SDR 11	1
PR114776040	Uponor PP-RCT Reducer, 6" x 4", SDR 11, Butt to Socket Fusion	1
<b>SDR 17.6</b>		
PR174774025	Uponor PP-RCT Fitting Reducer, 4" x 2½", SDR 17.6	1
PR174774030	Uponor PP-RCT Fitting Reducer, 4" x 3", SDR 17.6	1
PR174776040	Uponor PP-RCT Reducer, 6" x 4", SDR 17.6, Butt to Socket Fusion	1



The following parts are compatible with both potable and mechanical pipe. Be sure to select the SDR that corresponds with your piping system.

## Reducers – Molded (Butt Fusion)

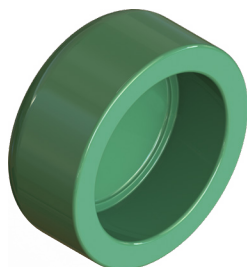
Part No.	Part Description	Pkg. Qty.
<b>SDR 9</b>		
PR94778040	Uponor PP-RCT Reducer, 8" x 4", SDR 9	1
PR94778060	Uponor PP-RCT Reducer, 8" x 6", SDR 9	1
PR94771060	Uponor PP-RCT Reducer, 10" x 6", SDR 9	1
PR94771080	Uponor PP-RCT Reducer, 10" x 8", SDR 9	1
PR94771280	Uponor PP-RCT Reducer, 12" x 8", SDR 9	1
PR94771210	Uponor PP-RCT Reducer, 12" x 10", SDR 9	1
<b>SDR 11</b>		
PR114778040	Uponor PP-RCT Reducer, 8" x 4", SDR 11	1
PR114778060	Uponor PP-RCT Reducer, 8" x 6", SDR 11	1
PR114771060	Uponor PP-RCT Reducer, 10" x 6", SDR 11	1
PR114771080	Uponor PP-RCT Reducer, 10" x 8", SDR 11	1
PR114771280	Uponor PP-RCT Reducer, 12" x 8", SDR 11	1
PR114771210	Uponor PP-RCT Reducer, 12" x 10", SDR 11	1
<b>SDR 17.6</b>		
PR174778040	Uponor PP-RCT Reducer, 8" x 4", SDR 17.6	1
PR174778060	Uponor PP-RCT Reducer, 8" x 6", SDR 17.6	1
PR174771060	Uponor PP-RCT Reducer, 10" x 6", SDR 17.6	1
PR174771080	Uponor PP-RCT Reducer, 10" x 8", SDR 17.6	1
PR174771280	Uponor PP-RCT Reducer, 12" x 8", SDR 17.6	1
PR174771210	Uponor PP-RCT Reducer, 12" x 10", SDR 17.6	1



# Uponor PP-RCT End Caps

## End Caps

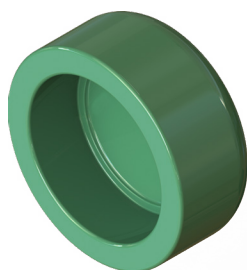
### End Caps (Socket Fusion)



The following parts are compatible with SDR 7.4, SDR 9, SDR 11, and SDR 17.6 potable and mechanical piping systems.

Part No.	Part Description	Pkg. Qty.
PR4350500	Uponor PP-RCT End Cap, ½"	30
PR4350750	Uponor PP-RCT End Cap, ¾"	25
PR4351000	Uponor PP-RCT End Cap, 1"	20
PR4351250	Uponor PP-RCT End Cap, 1¼"	10
PR4351500	Uponor PP-RCT End Cap, 1½"	6
PR4352000	Uponor PP-RCT End Cap, 2"	4
PR4352500	Uponor PP-RCT End Cap, 2½"	2
PR4353000	Uponor PP-RCT End Cap, 3"	1
PR4354000	Uponor PP-RCT End Cap, 4"	1

### End Caps – Molded (Butt Fusion)



The following parts are compatible with both potable and mechanical pipe. Be sure to select the SDR that corresponds with your piping system.

Part No.	Part Description	Pkg. Qty.
<b>SDR 9</b>		
PR9435600	Uponor PP-RCT End Cap, 6", SDR 9	1
PR943580	Uponor PP-RCT End Cap, 8", SDR 9	1
PR9435100	Uponor PP-RCT End Cap, 10", SDR 9	1
PR9435120	Uponor PP-RCT End Cap, 12", SDR 9	1
<b>SDR 11</b>		
PR1143560	Uponor PP-RCT End Cap, 6", SDR 11	1
PR1143580	Uponor PP-RCT End Cap, 8", SDR 11	1
PR11435100	Uponor PP-RCT End Cap, 10", SDR 11	1
PR11435120	Uponor PP-RCT End Cap, 12", SDR 11	1
<b>SDR 17.6</b>		
PR1743560	Uponor PP-RCT End Cap, 6", SDR 17.6	1
PR1743580	Uponor PP-RCT End Cap, 8", SDR 17.6	1
PR17435100	Uponor PP-RCT End Cap, 10", SDR 17.6	1
PR17435120	Uponor PP-RCT End Cap, 12", SDR 17.6	1

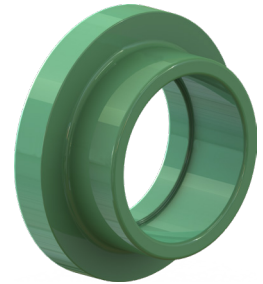
# Uponor PP-RCT Flange Adapters

## Flange Adapters

The following parts are compatible with SDR 7.4, SDR 9, SDR 11, and SDR 17.6 potable and mechanical piping systems.

Part No.	Part Description	Pkg. Qty.
PR2981000	Uponor PP-RCT Flange Adapter, 1"	10
PR2981250	Uponor PP-RCT Flange Adapter, 1¼"	6
PR2981500	Uponor PP-RCT Flange Adapter, 1½"	6
PR2982000	Uponor PP-RCT Flange Adapter, 2"	2
PR2982525	Uponor PP-RCT Flange Adapter, 2½", for Butterfly Valves	2
PR2983030	Uponor PP-RCT Flange Adapter, 3", for Butterfly Valves	2

### Flange Adapters (Socket Fusion)

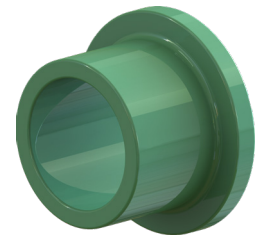


The following parts are compatible with both potable and mechanical pipe. Be sure to select the SDR that corresponds with your piping system.

Note that the 4" flange adapters (PR929840, PR1129840, and PR1729840) can be butt fused or socket fused if used in conjunction with the Uponor PP-RCT Coupling, 4" x 4" (PR4774040). All butt fusion flange adapters in sizes 4" to 12" are ANSI butterfly valve compliant.

Part No.	Part Description	Pkg. Qty.
<b>SDR 9</b>		
PR929840	Uponor PP-RCT Flange Adapter, 4", SDR 9, Butt or Socket Fused with Coupling	1
PR929860	Uponor PP-RCT Flange Adapter, 6", SDR 9	1
PR929880	Uponor PP-RCT Flange Adapter, 8", SDR 9	1
PR9298100	Uponor PP-RCT Flange Adapter, 10", SDR 9	1
PR9298120	Uponor PP-RCT Flange Adapter, 12", SDR 9	1
<b>SDR 11</b>		
PR1129840	Uponor PP-RCT Flange Adapter, 4", SDR 11, Butt or Socket Fused with Coupling	1
PR1129860	Uponor PP-RCT Flange Adapter, 6", SDR 11	1
PR1129880	Uponor PP-RCT Flange Adapter, 8", SDR 11	1
PR11298100	Uponor PP-RCT Flange Adapter, 10", SDR 11	1
PR11298120	Uponor PP-RCT Flange Adapter, 12", SDR 11	1
<b>SDR 17.6</b>		
PR1729840	Uponor PP-RCT Flange Adapter, 4", SDR 17.6, Butt or Socket Fused with Coupling	1
PR1729860	Uponor PP-RCT Flange Adapter, 6", SDR 17.6	1
PR1729880	Uponor PP-RCT Flange Adapter, 8", SDR 17.6	1
PR17298100	Uponor PP-RCT Flange Adapter, 10", SDR 17.6	1
PR17298120	Uponor PP-RCT Flange Adapter, 12", SDR 17.6	1

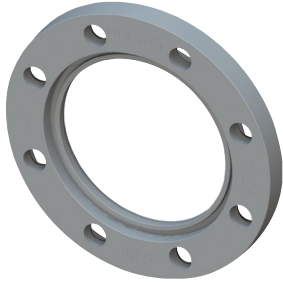
### Flange Adapters – Molded (Butt Fusion)



# Uponor PP-RCT Flange Rings

## Flange Rings

### Flange Rings



Flange rings are compatible with all SDRs for mechanical and potable applications and are used in conjunction with flange adapters. Be sure to purchase the correct flange ring to match the flange adapter.

Refer to the Uponor PP-RCT Flange Adapters Instruction Sheet for installation instructions, bolt information, and torque specifications.

Part No.	Part Description	Pkg. Qty.
PR3001000	Uponor PP-RCT Flange Ring, 1"	1
PR3001250	Uponor PP-RCT Flange Ring, 1¼"	1
PR3001500	Uponor PP-RCT Flange Ring, 1½"	1
PR3002000	Uponor PP-RCT Flange Ring, 2"	1
PR3002500	Uponor PP-RCT Flange Ring, 2½"	1
PR3003000	Uponor PP-RCT Flange Ring, 3"	1
PR3004000	Uponor PP-RCT Flange Ring, 4"	1
PR3006000	Uponor PP-RCT Flange Ring, 6"	1
PR3008000	Uponor PP-RCT Flange Ring, 8"	1
PR30010000	Uponor PP-RCT Flange Ring, 10"	1
PR30012000	Uponor PP-RCT Flange Ring, 12"	1



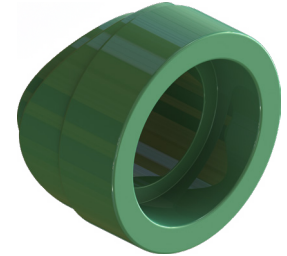
# Uponor PP-RCT Saddles

## Saddles

The following parts are compatible with SDR 7.4, SDR 9, SDR 11, and SDR 17.6 potable and mechanical piping systems.

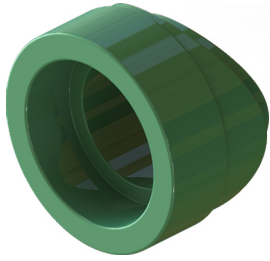
Part No.	Part Description	Pkg. Qty.
PR4781350	Uponor PP-RCT Saddle, 1¼" x ½", for Outlet Fusion	20
PR4781375	Uponor PP-RCT Saddle, 1¼" x ¾", for Outlet Fusion	20
PR4781550	Uponor PP-RCT Saddle, 1½" x ½", for Outlet Fusion	10
PR4781575	Uponor PP-RCT Saddle, 1½" x ¾", for Outlet Fusion	10
PR4782050	Uponor PP-RCT Saddle, 2" x ½", for Outlet Fusion	10
PR4782075	Uponor PP-RCT Saddle, 2" x ¾", for Outlet Fusion	10
PR4782010	Uponor PP-RCT Saddle, 2" x 1", for Outlet Fusion	10
PR4782550	Uponor PP-RCT Saddle, 2½" x ½", for Outlet Fusion	10
PR4782575	Uponor PP-RCT Saddle, 2½" x ¾", for Outlet Fusion	10
PR4782510	Uponor PP-RCT Saddle, 2½" x 1", for Outlet Fusion	10
PR4782513	Uponor PP-RCT Saddle, 2½" x 1¼", for Outlet Fusion	10
PR4783050	Uponor PP-RCT Saddle, 3" x ½", for Outlet Fusion	10
PR4783075	Uponor PP-RCT Saddle, 3" x ¾", for Outlet Fusion	10
PR4783010	Uponor PP-RCT Saddle, 3" x 1", for Outlet Fusion	10
PR4783013	Uponor PP-RCT Saddle, 3" x 1¼", for Outlet Fusion	5
PR4784050	Uponor PP-RCT Saddle, 4" x ½", for Outlet Fusion	10
PR4784075	Uponor PP-RCT Saddle, 4" x ¾", for Outlet Fusion	10
PR4784010	Uponor PP-RCT Saddle, 4" x 1", for Outlet Fusion	10
PR4784013	Uponor PP-RCT Saddle, 4" x 1¼", for Outlet Fusion	5
PR4784015	Uponor PP-RCT Saddle, 4" x 1½", for Outlet Fusion	5
PR4784020	Uponor PP-RCT Saddle, 4" x 2", for Outlet Fusion	5

### Saddles



# Uponor PP-RCT Saddles

## Saddles



The following parts are compatible with SDR 7.4, SDR 9, SDR 11, and SDR 17.6 potable and mechanical piping systems.

Part No.	Part Description	Pkg. Qty.
PR4786050	Uponor PP-RCT Saddle, 6" x ½", for Outlet Fusion	10
PR4786075	Uponor PP-RCT Saddle, 6" x ¾", for Outlet Fusion	10
PR4786010	Uponor PP-RCT Saddle, 6" x 1", for Outlet Fusion	10
PR4786013	Uponor PP-RCT Saddle, 6" x 1¼", for Outlet Fusion	5
PR4786015	Uponor PP-RCT Saddle, 6" x 1½", for Outlet Fusion	5
PR4786020	Uponor PP-RCT Saddle, 6" x 2", for Outlet Fusion	5
PR4786025	Uponor PP-RCT Saddle, 6" x 2½", for Outlet Fusion	5
PR4786030	Uponor PP-RCT Saddle, 6" x 3", for Outlet Fusion	2
PR4788050	Uponor PP-RCT Saddle, 8" x ½", for Outlet Fusion	10
PR4788075	Uponor PP-RCT Saddle, 8" x ¾", for Outlet Fusion	10
PR4788010	Uponor PP-RCT Saddle, 8" x 1", for Outlet Fusion	10
PR4788013	Uponor PP-RCT Saddle, 8" x 1¼", for Outlet Fusion	4
PR4788015	Uponor PP-RCT Saddle, 8" x 1½", for Outlet Fusion	4
PR4788020	Uponor PP-RCT Saddle, 8" x 2", for Outlet Fusion	4
PR4788025	Uponor PP-RCT Saddle, 8" x 2½", for Outlet Fusion	4
PR4788030	Uponor PP-RCT Saddle, 8" x 3", for Outlet Fusion	4
PR4788040	Uponor PP-RCT Saddle, 8" x 4", for Outlet Fusion	1
PR47810050	Uponor PP-RCT Saddle, 10" x ½", for Outlet Fusion	10
PR47810075	Uponor PP-RCT Saddle, 10" x ¾", for Outlet Fusion	10
PR47810010	Uponor PP-RCT Saddle, 10" x 1", for Outlet Fusion	10
PR47810013	Uponor PP-RCT Saddle, 10" x 1¼", for Outlet Fusion	4
PR47810015	Uponor PP-RCT Saddle, 10" x 1½", for Outlet Fusion	4
PR47810020	Uponor PP-RCT Saddle, 10" x 2", for Outlet Fusion	4
PR47810025	Uponor PP-RCT Saddle, 10" x 2½", for Outlet Fusion	4
PR47810030	Uponor PP-RCT Saddle, 10" x 3", for Outlet Fusion	4
PR47810040	Uponor PP-RCT Saddle, 10" x 4", for Outlet Fusion	1
PR47812020	Uponor PP-RCT Saddle, 12" x 2", for Outlet Fusion	4
PR47812025	Uponor PP-RCT Saddle, 12" x 2½", for Outlet Fusion	4
PR47812030	Uponor PP-RCT Saddle, 12" x 3", for Outlet Fusion	4
PR47812040	Uponor PP-RCT Saddle, 12" x 4", for Outlet Fusion	1

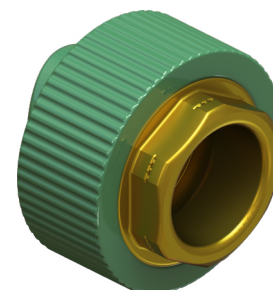
# Uponor PP-RCT Transition Saddles

## Transition Saddles

Use leaded brass transitions for mechanical applications only. For potable applications, use lead-free (LF) brass transitions.

Part No.	Part Description	Pkg. Qty.
PR4791550	Uponor PP-RCT Transition Saddle, 1½" x ½", Female NPT, for Outlet Fusion	10
PR4791575	Uponor PP-RCT Transition Saddle, 1½" x ¾", Female NPT, for Outlet Fusion	10
PR4792050	Uponor PP-RCT Transition Saddle, 2" x ½", Female NPT, for Outlet Fusion	10
PR4792075	Uponor PP-RCT Transition Saddle, 2" x ¾", Female NPT, for Outlet Fusion	10
PR4792550	Uponor PP-RCT Transition Saddle, 2½" x ½", Female NPT, for Outlet Fusion	10
PR4792575	Uponor PP-RCT Transition Saddle, 2½" x ¾", Female NPT, for Outlet Fusion	10
PR4792510	Uponor PP-RCT Transition Saddle, 2½" x 1", Female NPT, for Outlet Fusion	5
PR4793050	Uponor PP-RCT Transition Saddle, 3" x ½", Female NPT, for Outlet Fusion	5
PR4793075	Uponor PP-RCT Transition Saddle, 3" x ¾", Female NPT, for Outlet Fusion	5
PR4793010	Uponor PP-RCT Transition Saddle, 3" x 1", Female NPT, for Outlet Fusion	5
PR4794050	Uponor PP-RCT Transition Saddle, 4" x ½", Female NPT, for Outlet Fusion	5
PR4794075	Uponor PP-RCT Transition Saddle, 4" x ¾", Female NPT, for Outlet Fusion	5
PR4794010	Uponor PP-RCT Transition Saddle, 4" x 1", Female NPT, for Outlet Fusion	5
PR4796050	Uponor PP-RCT Transition Saddle, 6" x ½", Female NPT, for Outlet Fusion	10
PR4796075	Uponor PP-RCT Transition Saddle, 6" x ¾", Female NPT, for Outlet Fusion	5
PR4796010	Uponor PP-RCT Transition Saddle, 6" x 1", Female NPT, for Outlet Fusion	5
PR4798050	Uponor PP-RCT Transition Saddle, 8" x ½", Female NPT, for Outlet Fusion	4
PR4798075	Uponor PP-RCT Transition Saddle, 8" x ¾", Female NPT, for Outlet Fusion	4
PR4798010	Uponor PP-RCT Transition Saddle, 8" x 1", Female NPT, for Outlet Fusion	4
PR47910050	Uponor PP-RCT Transition Saddle, 10" x ½", Female NPT, for Outlet Fusion	4
PR47910075	Uponor PP-RCT Transition Saddle, 10" x ¾", Female NPT, for Outlet Fusion	4
PR47910010	Uponor PP-RCT Transition Saddle, 10" x 1", Female NPT, for Outlet Fusion	4

**Transition Saddles – Female NPT**  
(Outlet Fusion)



# Uponor PP-RCT Transition Saddles

## Transition Saddles – Lead-Free Female NPT (Outlet Fusion)



Use lead-free (LF) brass transitions for potable applications. For mechanical applications, use leaded brass transitions.

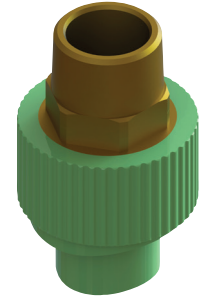
Part No.	Part Description	Pkg. Qty.
PR5791550	Uponor PP-RCT LF Transition Saddle, 1½" x ½", Female NPT, for Outlet Fusion	10
PR5791575	Uponor PP-RCT LF Transition Saddle, 1½" x ¾", Female NPT, for Outlet Fusion	10
PR5792050	Uponor PP-RCT LF Transition Saddle, 2" x ½", Female NPT, for Outlet Fusion	10
PR5792075	Uponor PP-RCT LF Transition Saddle, 2" x ¾", Female NPT, for Outlet Fusion	10
PR5792550	Uponor PP-RCT LF Transition Saddle, 2½" x ½", Female NPT, for Outlet Fusion	10
PR5792575	Uponor PP-RCT LF Transition Saddle, 2½" x ¾", Female NPT, for Outlet Fusion	10
PR5792510	Uponor PP-RCT LF Transition Saddle, 2½" x 1", Female NPT, for Outlet Fusion	10
PR5793050	Uponor PP-RCT LF Transition Saddle, 3" x ½", Female NPT, for Outlet Fusion	5
PR5793075	Uponor PP-RCT LF Transition Saddle, 3" x ¾", Female NPT, for Outlet Fusion	5
PR5793010	Uponor PP-RCT LF Transition Saddle, 3" x 1", Female NPT, for Outlet Fusion	5
PR5794050	Uponor PP-RCT LF Transition Saddle, 4" x ½", Female NPT, for Outlet Fusion	5
PR5794075	Uponor PP-RCT LF Transition Saddle, 4" x ¾", Female NPT, for Outlet Fusion	5
PR5794010	Uponor PP-RCT LF Transition Saddle, 4" x 1", Female NPT, for Outlet Fusion	5
PR5796050	Uponor PP-RCT LF Transition Saddle, 6" x ½", Female NPT, for Outlet Fusion	10
PR5796075	Uponor PP-RCT LF Transition Saddle, 6" x ¾", Female NPT, for Outlet Fusion	5
PR5796010	Uponor PP-RCT LF Transition Saddle, 6" x 1", Female NPT, for Outlet Fusion	10
PR5798050	Uponor PP-RCT LF Transition Saddle, 8" x ½", Female NPT, for Outlet Fusion	10
PR5798075	Uponor PP-RCT LF Transition Saddle, 8" x ¾", Female NPT, for Outlet Fusion	5
PR5798010	Uponor PP-RCT LF Transition Saddle, 8" x 1", Female NPT, for Outlet Fusion	5
PR57910050	Uponor PP-RCT LF Transition Saddle, 10" x ½", Female NPT, for Outlet Fusion	10
PR57910075	Uponor PP-RCT LF Transition Saddle, 10" x ¾", Female NPT, for Outlet Fusion	5
PR57910010	Uponor PP-RCT LF Transition Saddle, 10" x 1", Female NPT, for Outlet Fusion	5

# Uponor PP-RCT Transition Saddles

Use leaded brass transitions for mechanical applications only. For potable applications, use lead-free (LF) brass transitions.

Part No.	Part Description	Pkg. Qty.
PR4811550	Uponor PP-RCT Transition Saddle, 1½" x ½", Male NPT, for Outlet Fusion	10
PR4811575	Uponor PP-RCT Transition Saddle, 1½" x ¾", Male NPT, for Outlet Fusion	10
PR4812050	Uponor PP-RCT Transition Saddle, 2" x ½", Male NPT, for Outlet Fusion	10
PR4812075	Uponor PP-RCT Transition Saddle, 2" x ¾", Male NPT, for Outlet Fusion	10
PR4812550	Uponor PP-RCT Transition Saddle, 2½" x ½", Male NPT, for Outlet Fusion	10
PR4812575	Uponor PP-RCT Transition Saddle, 2½" x ¾", Male NPT, for Outlet Fusion	10
PR4813050	Uponor PP-RCT Transition Saddle, 3" x ½", Male NPT, for Outlet Fusion	5
PR4813075	Uponor PP-RCT Transition Saddle, 3" x ¾", Male NPT, for Outlet Fusion	5
PR4814050	Uponor PP-RCT Transition Saddle, 4" x ½", Male NPT, for Outlet Fusion	5
PR4814075	Uponor PP-RCT Transition Saddle, 4" x ¾", Male NPT, for Outlet Fusion	5
PR4816050	Uponor PP-RCT Transition Saddle, 6" x ½", Male NPT, for Outlet Fusion	10
PR4816075	Uponor PP-RCT Transition Saddle, 6" x ¾", Male NPT, for Outlet Fusion	5

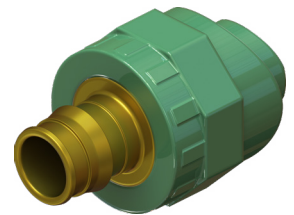
## Transition Saddles – Male NPT (Outlet Fusion)



Use lead-free (LF) brass transitions for potable applications. For mechanical applications, use leaded brass transitions.

Part No.	Part Description	Pkg. Qty.
PR4511550	Uponor ProPEX LF Brass Saddle Adapter, 1½"/¾" PP-RCT x ½" PEX, for Outlet Fusion	10
PR4512075	Uponor ProPEX LF Brass Saddle Adapter, 2"/¾" PP-RCT x ¾" PEX, for Outlet Fusion	5

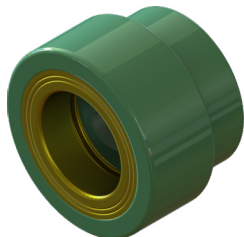
## Transition Saddles – Lead-Free ProPEX® (Outlet Fusion)



# Uponor PP-RCT Transition Adapters

## Transition Adapters

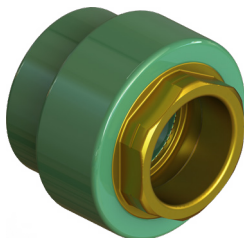
### Transition Adapters – Female NPT (Socket Fusion)



Use leaded brass transitions for mechanical applications only. For potable applications, use lead-free (LF) brass transitions.

Part No.	Part Description	Pkg. Qty.
PR5575050	Uponor Brass Female Threaded Adapter, ½" PP-RCT x ½" NPT	10
PR5577550	Uponor Brass Female Threaded Adapter, ¾" PP-RCT x ½" NPT	10
PR5577575	Uponor Brass Female Threaded Adapter, ¾" PP-RCT x ¾" NPT	10
PR5571075	Uponor Brass Female Threaded Adapter, 1" PP-RCT x ¾" NPT	10
PR5571010	Uponor Brass Female Threaded Adapter, 1" PP-RCT x 1" NPT	10
PR5571310	Uponor Brass Female Threaded Adapter, 1¼" PP-RCT x 1" NPT	6
PR5571313	Uponor Brass Female Threaded Adapter, 1¼" PP-RCT x 1¼" NPT	6
PR5571515	Uponor Brass Female Threaded Adapter, 1½" PP-RCT x 1½" NPT	4
PR5572020	Uponor Brass Female Threaded Adapter, 2" PP-RCT x 2" NPT	4

### Transition Adapters – Lead-Free Female NPT (Socket Fusion)



Use lead-free (LF) brass transitions for potable applications. For mechanical applications, use leaded brass transitions.

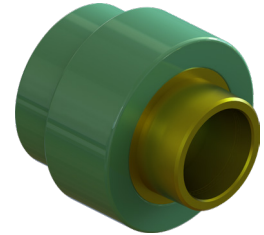
Part No.	Part Description	Pkg. Qty.
PR4575050	Uponor LF Brass Female Threaded Adapter, ½" PP-RCT x ½" NPT	10
PR4575075	Uponor LF Brass Female Threaded Adapter, ½" PP-RCT x ¾" NPT	10
PR4577550	Uponor LF Brass Female Threaded Adapter, ¾" PP-RCT x ½" NPT	10
PR4577575	Uponor LF Brass Female Threaded Adapter, ¾" PP-RCT x ¾" NPT	10
PR4571075	Uponor LF Brass Female Threaded Adapter, 1" PP-RCT x ¾" NPT	10
PR4571010	Uponor LF Brass Female Threaded Adapter, 1" PP-RCT x 1" NPT	10
PR4571310	Uponor LF Brass Female Threaded Adapter, 1¼" PP-RCT x 1" NPT	6
PR4571313	Uponor LF Brass Female Threaded Adapter, 1¼" PP-RCT x 1¼" NPT	6
PR4571515	Uponor LF Brass Female Threaded Adapter, 1½" PP-RCT x 1½" NPT	4
PR4572020	Uponor LF Brass Female Threaded Adapter, 2" PP-RCT x 2" NPT	4

# Uponor PP-RCT Transition Adapters

Use leaded brass transitions for mechanical applications only. For potable applications, use lead-free (LF) brass transitions.

Part No.	Part Description	Pkg. Qty.
PR5525050	Uponor Brass Male Threaded Adapter, ½" PP-RCT x ½" NPT	10
PR5527575	Uponor Brass Male Threaded Adapter, ¾" PP-RCT x ¾" NPT	10
PR5521010	Uponor Brass Male Threaded Adapter, 1" PP-RCT x 1" NPT	10
PR5521313	Uponor Brass Male Threaded Adapter, 1¼" PP-RCT x 1¼" NPT	6
PR5521515	Uponor Brass Male Threaded Adapter, 1½" PP-RCT x 1½" NPT	4
PR5522020	Uponor Brass Male Threaded Adapter, 2" PP-RCT x 2" NPT	4

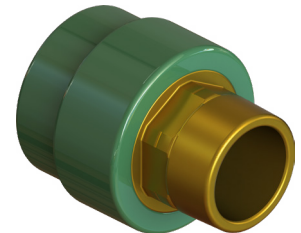
**Transition Adapters – Male NPT**  
(Socket Fusion)



Use lead-free (LF) brass transitions for potable applications. For mechanical applications, use leaded brass transitions.

Part No.	Part Description	Pkg. Qty.
PR4525050	Uponor LF Brass Male Threaded Adapter, ½" PP-RCT x ½" NPT	10
PR4527550	Uponor LF Brass Male Threaded Adapter, ¾" PP-RCT x ½" NPT	10
PR4527575	Uponor LF Brass Male Threaded Adapter, ¾" PP-RCT x ¾" NPT	10
PR4521075	Uponor LF Brass Male Threaded Adapter, 1" PP-RCT x ¾" NPT	10
PR4521010	Uponor LF Brass Male Threaded Adapter, 1" PP-RCT x 1" NPT	10
PR4521313	Uponor LF Brass Male Threaded Adapter, 1¼" PP-RCT x 1¼" NPT	6
PR4521515	Uponor LF Brass Male Threaded Adapter, 1½" PP-RCT x 1½" NPT	4
PR4522020	Uponor LF Brass Male Threaded Adapter, 2" PP-RCT x 2" NPT	4

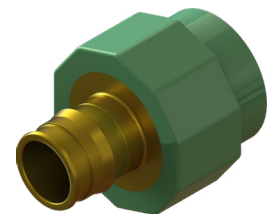
**Transition Adapters – Lead-Free Male NPT**  
(Socket Fusion)



Use lead-free (LF) brass transitions for potable applications. For mechanical applications, use leaded brass transitions.

Part No.	Part Description	Pkg. Qty.
PR4515050	Uponor ProPEX LF Brass Adapter, ½" PP-RCT x ½" PEX	10
PR4517575	Uponor ProPEX LF Brass Adapter, ¾" PP-RCT x ¾" PEX	10
PR4511010	Uponor ProPEX LF Brass Adapter, 1" PP-RCT x 1" PEX	5

**Transition Adapters – Lead-Free ProPEX**  
(Socket Fusion)

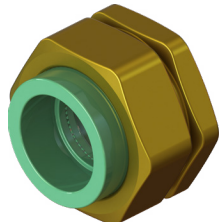


# Uponor PP-RCT Products

## Brass Unions

### Brass Unions

Brass unions feature a PP-RCT socket end on each side. They require no additional couplings. Adjust the threads on the brass component to shorten or lengthen the union.



Part No.	Part Description	Pkg. Qty.
PR4720500	Uponor PP-RCT Brass Union, ½"	10
PR4720750	Uponor PP-RCT Brass Union, ¾"	10
PR4721000	Uponor PP-RCT Brass Union, 1"	5
PR4721250	Uponor PP-RCT Brass Union, 1¼"	3
PR4721500	Uponor PP-RCT Brass Union, 1½"	2
PR4722000	Uponor PP-RCT Brass Union, 2"	2

## Repair Plugs

### Repair Plugs



Part No.	Part Description	Pkg. Qty.
PR6071000	Uponor PP-RCT Repair Plug	10

## Marking Guides

### Marking Guides

Use the PP-RCT marking guide to mark the weld (or stab) depth on Uponor PP-RCT pipes when socket fusing.



Part No.	Part Description	Pkg. Qty.
PR6041000	Uponor PP-RCT Marking Guide	10









**Moving  
> Water**

**uponor**



**Uponor Inc.**

5925 148th Street West  
Apple Valley, MN 55124  
USA

**T** 800.321.4739

**F** 952.891.2008

[uponor.com](https://www.uponor.com)

PP-RCT\_Catalog\_0124, Copyright © 2024 Uponor. Printed in the United States.